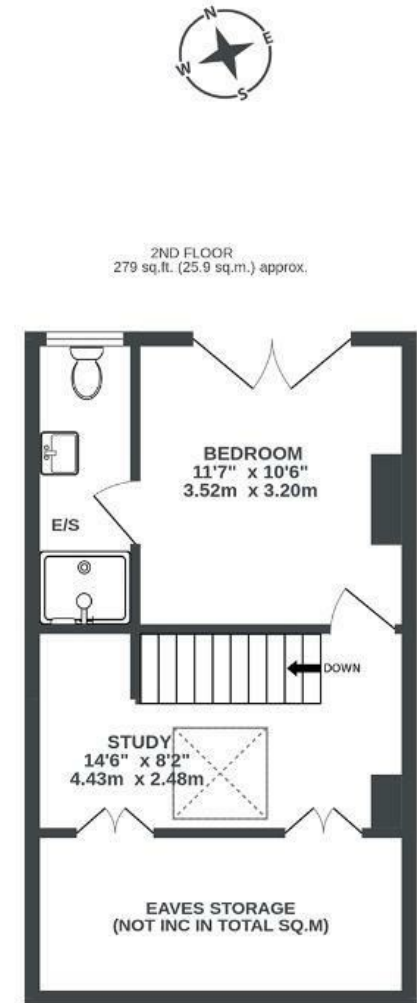
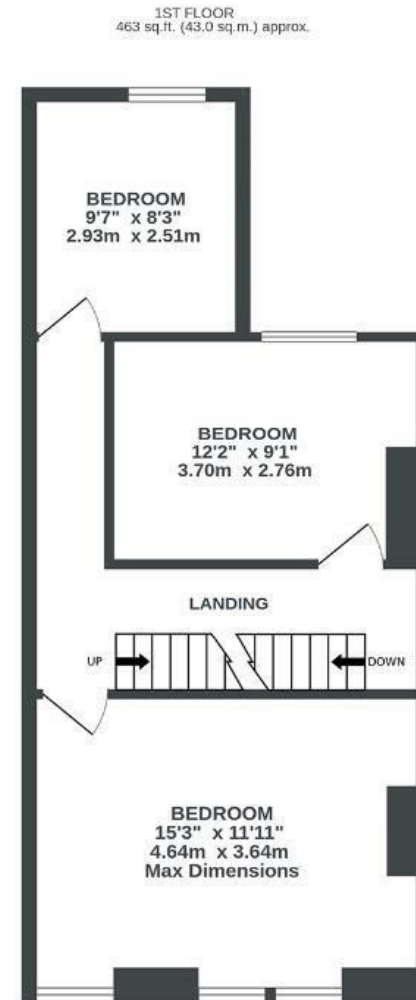
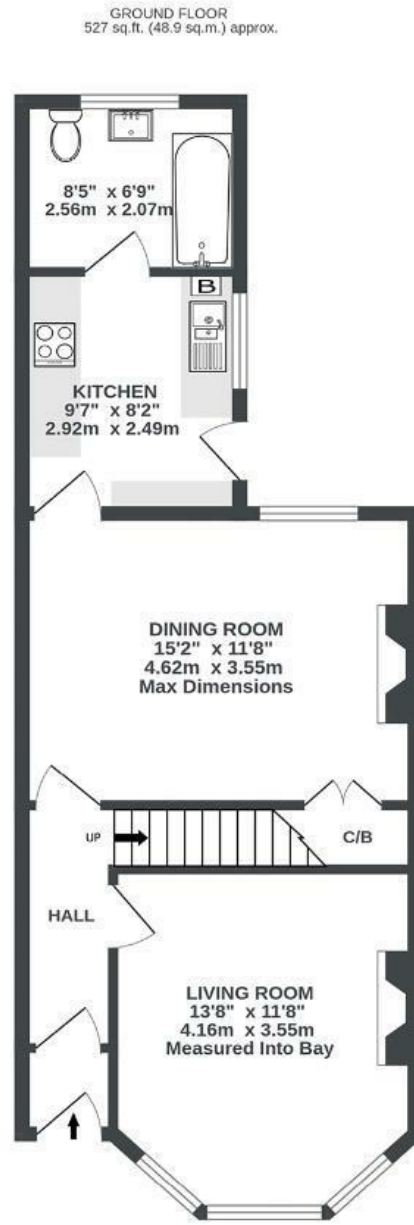


Boston Road

HORFIELD

APPROXIMATE FLOOR AREA
117.9 SQM / 1269 SQFT



Illustrations are for reference purposes only, measurements are approximate, not to scale.

Boardwalk

Boston Road

HORFIELD, BRISTOL

£

£475,000

zzz

4 Bedrooms



BS7 0HA



2 Bathrooms

"We love the well proportioned rooms and high ceilings. The front is not overlooked by another house so on a sunny day, the rooms are flooded with sunlight. We love that we are five minutes from the Leisure Centre and ten from Horfield Common, both have proven super useful with our five year old. The street has a lovely sense of community and supportive WhatsApp group, we will really miss this when we leave."

